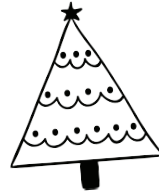


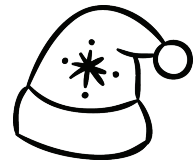
What comes at the end
of Christmas Day?



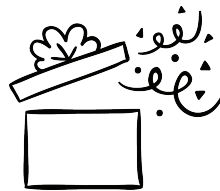
The letter "Y"!

Why is it so cold at
Christmas?

Because it's in
Decembrrrrrrrr!



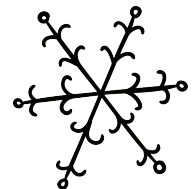
Why do Mummies like
Christmas so much?



Because of all
the wrapping!

What do fish sing
during winter?

Christmas corals!



What is a Christmas tree's
favorite candy?



Ornamints!

How does a sheep say
"Merry Christmas"?

"Fleece Navidad!"

